

RIVESTIMENTI

UPHOLSTERY/ REVÊTEMENTS

LAS[®]

FINITURE

FINISHES | FINITIONS

	Poli	Eco-Pelle	Crepe	Stretch	Melange	Trevi	Lana	Crazy by Flukso	Taylor F.R. by Flukso	Go Check by Gabriel	Runner by Gabriel	Pelle	Rete Round	Rete Break	Rete Gabriel	Tecnopolimeri	Tecnopolimeri	Tecnopolimeri	Tecnopolimeri
Category	A	B	B	D	D	D	E	E	F	G	G	H	R1	R2	R3	T1	T2	T3	T4
Direzionali Executive chairs Fauteuils de direction																			
Lead_		•					•	•	•	•		•							
Jera_		•			•		•	•	•	•		•							
Scena_		•			•	•	•	•	•	•		•							
Neo Chair_		•						•	•	•		•							
Athena_		•	•		•	•		•	•			•							
Formen_		•	•			•		•	•			•							
Galassia_	•	•	•		•	•		•	•			•							
Operative Operative chairs Sieges de travail																			
Sistema_	•	•	•	•	•	•		•	•	•									
Sistema_ Rete	•	•	•	•	•	•		•	•	•			•						
Cast_	•	•	•	•	•	•		•	•	•									
Cast_ Rete	•	•	•	•	•	•		•	•	•			•						
Ciak_	•	•	•	•	•	•		•	•	•									
Ciak_ Rete	•	•	•	•	•	•		•	•	•				•					
Hellò_	•	•	•	•	•	•		•	•	•									
Hellò_ Rete	•	•	•	•	•	•		•	•	•				•					
Oscar_	•	•	•	•	•	•		•	•	•	•								
Oscar_ Rete	•	•	•	•	•	•		•	•	•	•				•				
Multiuso Forall Polyvalent																			
F01_	•	•	•	•	•	•										•			
F02_	•	•	•	•	•	•											•		
F03_	•	•	•	•	•	•												•	
F04_	•	•	•	•	•	•	•		•	•	•								•
Attesa e riunione Waiting and meeting Attente et reunion																			
Panca Benches Bancs F01	•	•	•	•	•	•										•			
Panca Benches Bancs F03	•	•	•	•	•	•												•	
Regia_		•	•		•	•	•	•	•	•		•							
Movie_	•	•	•		•	•	•	•	•	•		•							
Lounge																			
Jera_		•			•		•	•	•	•		•							
Trend_	•	•	•		•	•	•	•	•	•	•	•							
Domus_	•	•	•		•	•	•	•	•	•		•							
Set_	•	•	•		•	•	•	•	•	•		•							
Smart office																			
Flags_				•	•		•	•	•	•	•								

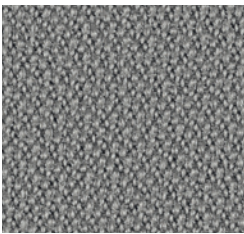
CAT_A

POLI

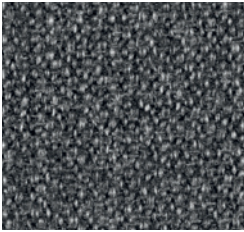
100% Polipropilene F.R.
Peso: 250 gr/m²
Martindale 50.000 cicli
Ignifugo classe 1

100% Polypropylene F.R.
Weight: 250 gr/m²
Martindale 50.000 turns
Fire-retardant class 1 (one)

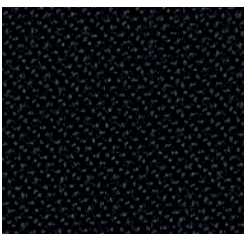
100% Polypropylene F.R.
Poids: 250 gr/m²
Martindale 50.000 cycles
Ignifuge classe 1



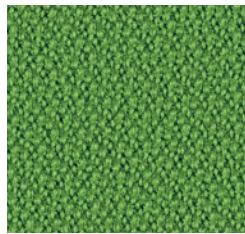
475 - Grigio
Grey | Gris



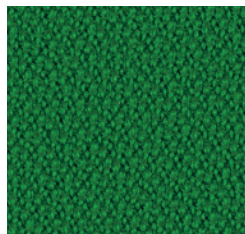
476 - Grigio Melange
Melange Grey | Gris Mélange



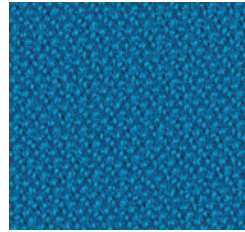
477 - Nero
Black | Noir



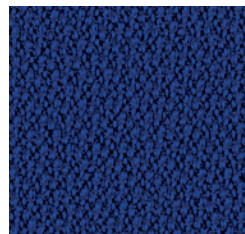
478 - Verde Chiaro
Light Green | Vert Clair



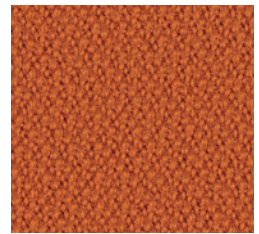
479 - Verde
Green | Vert



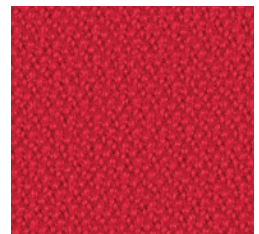
480 - Azzurro
Azure | Azur



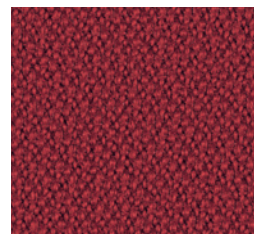
481 - Blu
Blue | Bleu



482 - Arancio
Orange | Orange



483 - Rosso
Red | Rouge



484 - Bordeaux
Bordeaux | Bordeaux

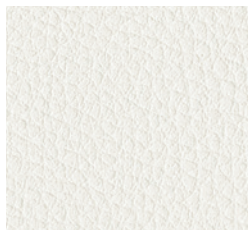
CAT_B

ECO-PELLE

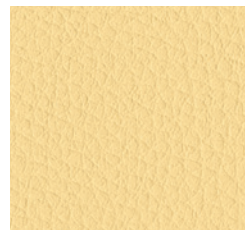
Composizione fibrosa:
65% Poliestere
35% Cotone
Composizione globale:
85% PVC
10% Poliestere
5% Cotone
Peso: 600 gr/m²
Martindale 51.200 cicli
Ignifugo classe 1

Fibrous composition
65% Polyester
35% Cotton
Global composition:
85% PVC
10% Polyester
5% Cotton
Weight: 600 gr/m²
Martindale 51.200 turns
Fire-retardant class 1 (one)

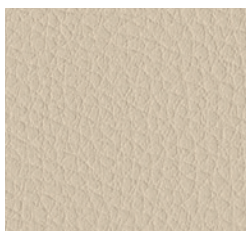
Composition fibreuse:
65% Polyester
35% Coton
Composition globale:
85% PVC
10% Polyester
5% Coton
Poids: 600 gr/m²
Martindale 51.200 cycles
Ignifuge classe 1



503 - Bianco
White | Blanc



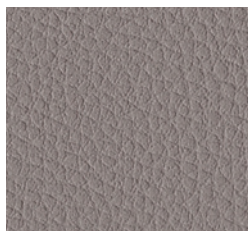
515 - Giallo
Yellow | Jaune



507 - Avorio
Ivory | Ivoire



511 - Verde Acido
Acid Green | Vert Acide



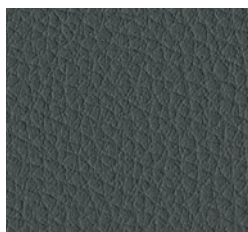
504 - Grigio
Grey | Gris



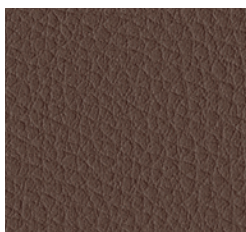
508 - Tabacco
Tobacco | Tabac



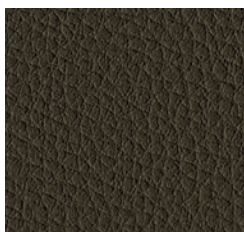
513 - Avio
Navy Blue | Bleu Aviateur



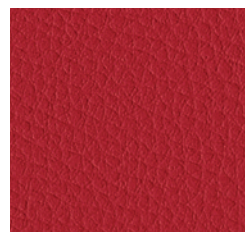
505 - Ardesia
Slate | Ardoise



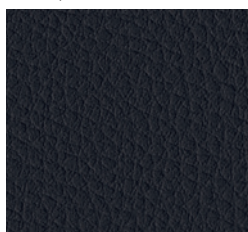
509 - Marrone
Brown | Marron



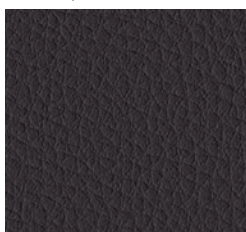
512 - Muschio
Moss Green | Vert Mousse



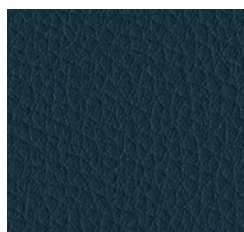
516 - Rosso
Red | Rouge



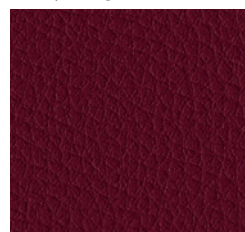
506 - Nero
Black | Noir



510 - Testa di Moro
Dark Brown | Marron Foncé



514 - Blu
Blue | Bleu



517 - Granata
Garnet | Grenat

La stampa ha carattere indicativo e potrebbe scostarsi leggermente dalla realtà
The printout is an example and may differ slightly from the actual product | L'impression a caractère indicatif et pourrait différer de la réalité

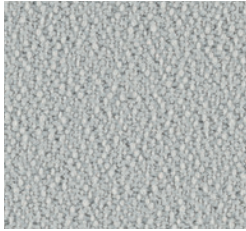
CAT_B

CREPE

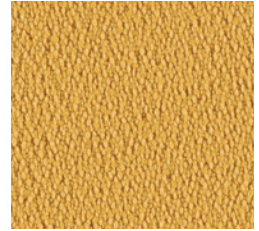
100% Poliestere
FR-TREVIRA CS
Peso: 330 gr/m²
Martindale 100.000 cicli
Ignifugo classe 1

100% Polyester
FR-TREVIRA CS
Weight: 330 gr/m²
Martindale 100.000 turns
Fire-retardant class 1 (one)

100% Polyester
FR-TREVIRA CS
Poids: 330 gr/m²
Martindale 100.000 cycles
Ignifuge classe 1



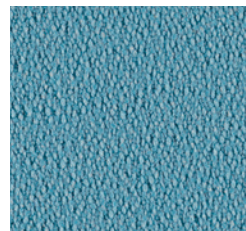
522 - Grigio Perla
Light Grey | Gris Clair



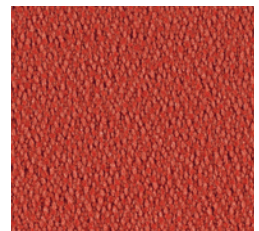
534 - Giallo
Yellow | Jaune



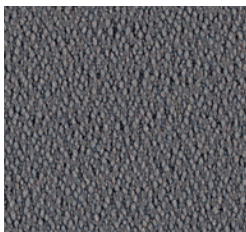
525 - Avorio
Ivory | Ivoire



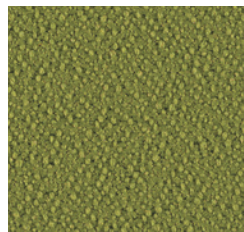
530 - Artico
Arctic | Arctique



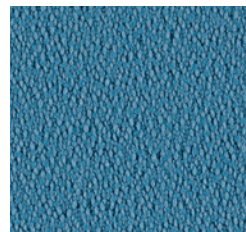
535 - Arancio
Orange | Orange



523 - Grigio Scuro
Dark Grey | Gris Foncé



528 - Verde Acido
Acid Green | Vert Acide



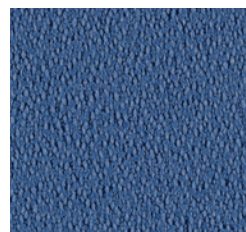
531 - Celeste
Light Blue | Bleu Clair



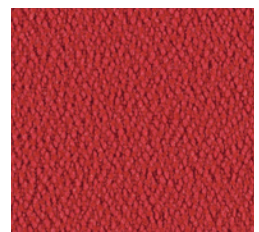
536 - Vinaccio
Wine Red | Rouge Vin



526 - Nocciola
Hazel | Noisette



532 - Cobalto
Cobalt | Cobalt



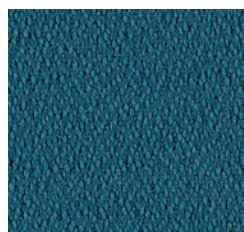
537 - Rosso
Red | Rouge



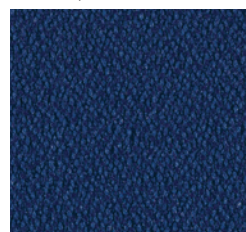
524 - Nero
Black | Noir



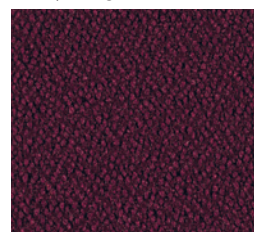
527 - Malto
Malt | Malt



529 - Petrolio
Petroleum | Huile



533 - Blu
Blue | Bleu



538 - Prugna
Plum | Prune

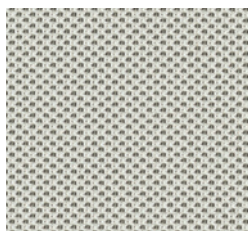
CAT_D

STRETCH

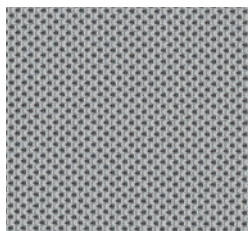
100% Poliestere
FR RICICLATO
Peso: 340 gr/m²
Martindale 50.000 cicli
Ignifugo classe 1

100% Polyester FR
RECYCLED
Weight: 340 gr/m²
Martindale 50.000 turns
Fire-retardant class 1 (one)

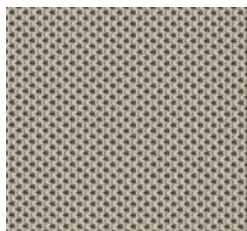
100% Polyester
FR RECYCLÉ
Poids: 340 gr/m²
Martindale 50.000 cycles
Ignifuge classe 1



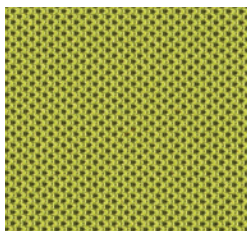
585 - Avorio
Ivory | Ivoire



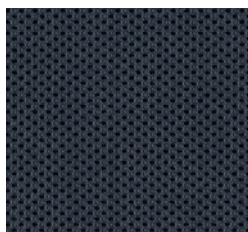
586 - Grigio
Grey | Gris



589 - Tortora
Grey Beige | Gris Tourterelle



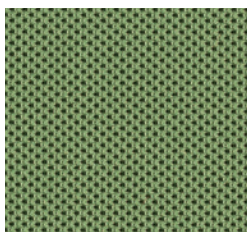
591 - Verde Acido
Acid Green | Vert Acide



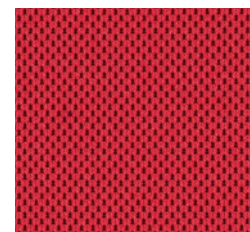
587 - Antracite
Anthracite | Anthracite



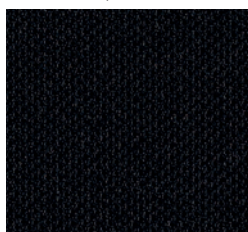
592 - Verde Bosco
Wood Green | Vert Forêt



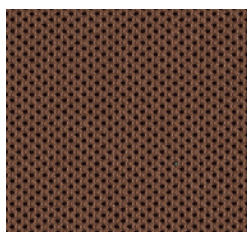
593 - Azzurro Sky
Sky Blue | Bleu Sky



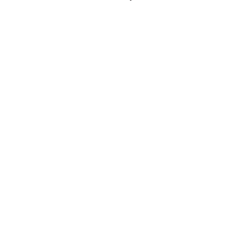
597 - Rosso
Red | Rouge



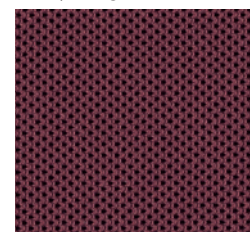
588 - Nero
Black | Noir



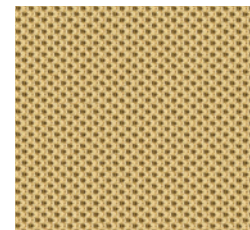
590 - Marrone
Brown | Marron



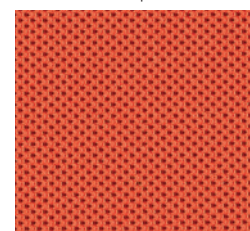
594 - Blu
Blue | Bleu



598 - Amaranto
Amaranth | Amarante



595 - Giallo Fresia
Freesia Yellow | Jaune Freesia



596 - Arancio
Orange | Orange

La stampa ha carattere indicativo e potrebbe scostarsi leggermente dalla realtà
The printout is an example and may differ slightly from the actual product | L'impression a caractère indicatif et pourrait différer de la réalité

CAT_D

MELANGE

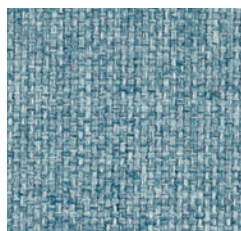
100% Poliestere
FR RICICLATO
Peso: 340 gr/m²
Martindale 50.000 cicli
Ignifugo classe 1

100% Polyester
FR RECYCLED
Weight: 340 gr/m²
Martindale 50.000 turns
Fire-retardant class 1 (one)

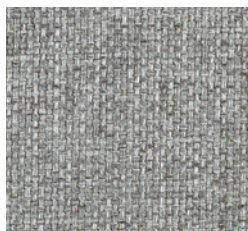
100% Polyester
FR RECYCLÉ
Poids: 340 gr/m²
Martindale 50.000 cycles
Ignifuge classe 1



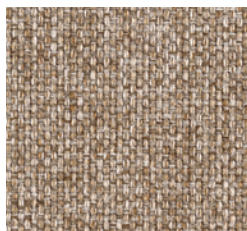
603 - Cenere
Ash | Cendre



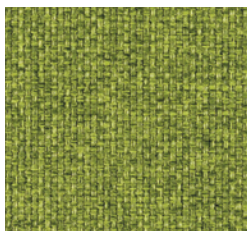
611 - Artico
Arctic | Arctique



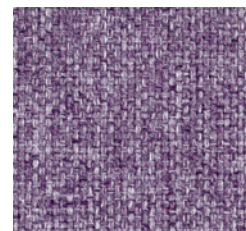
604 - Grigio
Grey | Gris



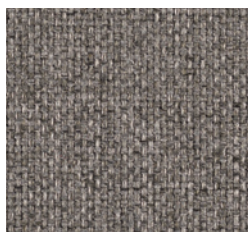
606 - Tortora
Grey Beige | Gris Tourterelle



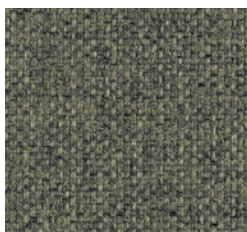
608 - Verde Acido
Acid Green | Vert Acide



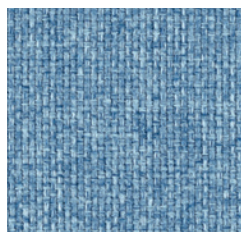
614 - Petunia
Petunia | Pétunia



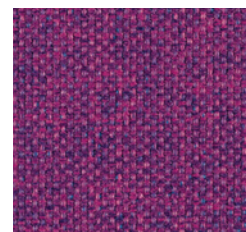
605 - Fumo
Smoke | Fumée



609 - Muschio
Moss Green | Vert Mousse



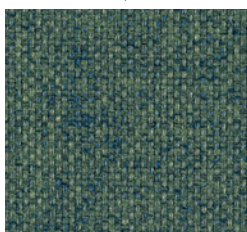
612 - Azzurro
Azure | Azur



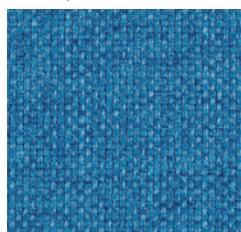
615 - Ribes
Currant | Groseille



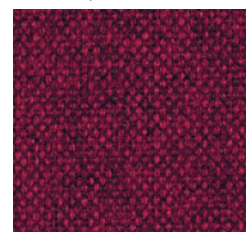
607 - Nocciola
Hazel | Noisette



610 - Verdone
Dark Green | Vert Foncé



613 - Cobalto
Cobalt | Cobalt



616 - Granata
Garnet | Grenat

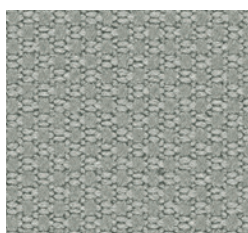
CAT_D

TREVI

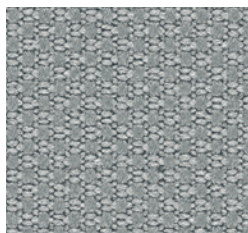
100% Poliestere FR
TREVIRA CS
Peso: 450 gr/m²
Martindale 70.000 cicli
Ignifugo classe 1

100% Polyester FR
TREVIRA CS
Weight: 450 gr/m²
Martindale 70.000 turns
Fire-retardant class 1 (one)

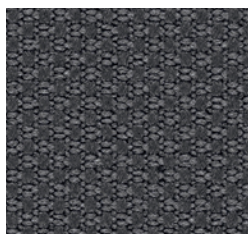
100% Polyester FR
TREVIRA CS
Poids: 450 gr/m²
Martindale 70.000 cycles
Ignifuge classe 1



621 - Grigio
Grey | Gris



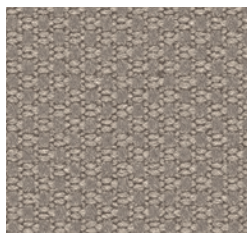
622 - Porfido
Porphyry | Porphyre



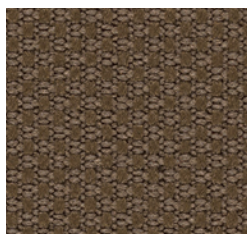
623 - Grigio Scuro
Dark Grey | Gris Foncé



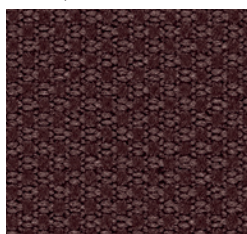
624 - Nero
Black | Noir



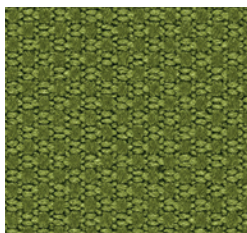
625 - Tortora
Grey Beige | Gris Tourterelle



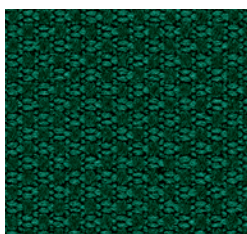
626 - Nocciola
Hazel | Noisette



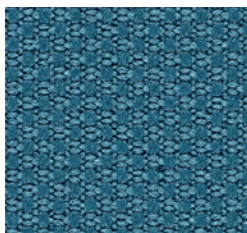
627 - Marrone
Brown | Marron



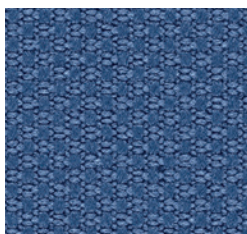
628 - Verde Acido
Acid Green | Vert Acide



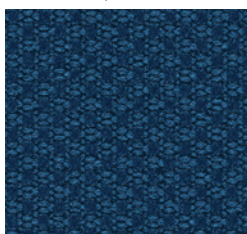
629 - Petrolio
Petroleum | Pétrole



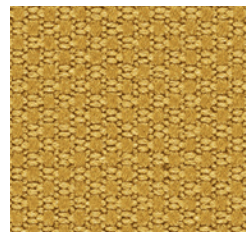
630 - Celeste
Light Blue | Bleu Clair



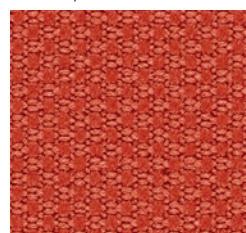
631 - Pervinca
Periwinkle | Pervenche



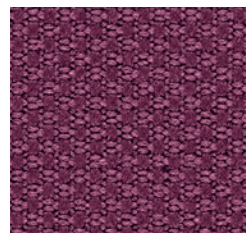
632 - Blu
Blue | Bleu



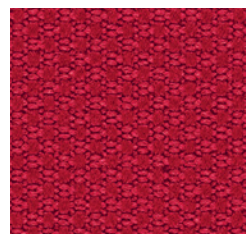
633 - Ocre
Ocher | Ocre



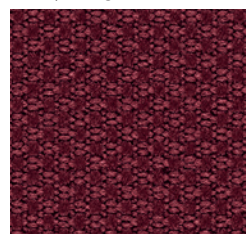
634 - Mattone
Brick Red | Rouge Brique



635 - Petunia
Petunia | Pétunia



636 - Rosso
Red | Rouge



637 - Amaranto
Amaranth | Amarante

La stampa ha carattere indicativo e potrebbe scostarsi leggermente dalla realtà
The printout is an example and may differ slightly from the actual product | L'impression a caractère indicatif et pourrait différer de la réalité

CAT_E

LANA

75% Lana
25% Poliammide
Peso: 335 gr/m²
Martindale 100.000 cicli

75% Wool
25% Polyamide
Weight: 335 gr/m²
Martindale 100.000 turns

75% Laine
25% Polyamide
Poids: 335 gr/m²
Martindale 100.000 cycles



642 - Grigio Chiaro
Light Grey | Gris Clair



645 - Tortora
Grey Beige | Gris Tourterelle



643 - Grigio Scuro
Dark Grey | Gris Foncé



647 - Verde Acido
Acid Green | Vert Acide



651 - Pervinca
Periwinkle | Pervenche



654 - Mattone
Brick Red | Rouge Brique



646 - Marrone
Brown | Marron



648 - Muschio
Moss Green | Vert Mousse



652 - Avio
Navy Blue | Bleu Aviateur



655 - Fuoco
Fire Red | Rouge Feu



644 - Fumo
Smoke | Fumée



649 - Artico
Arctic | Arctique



650 - Malibú
Malibu | Malibu



653 - Ruggine
Russet | Rouille

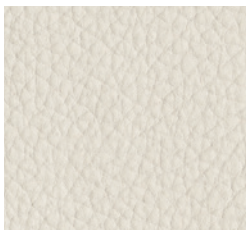
CAT_E

CRAZY by Flukso

80% PVC
18% Poliestere
2% Fibra poliuretanică
Peso: 600 gr/m²
Abrasion 50.000 cicli
Ignifugo classe 1

80% PVC
18% Polyester
2% Polyurethane fiber
Weight: 600 gr/m²
Abrasion 50.000 turns
Fire-retardant class 1 (one)

80% PVC
18% Polyester
2% Fibres de polyuréthane
Poids: 600 gr/m²
Abrasion 50.000 cycles
Ignifuge classe 1



660 - Bianco
White | Blanc



661 - Grigio
Grey | Gris



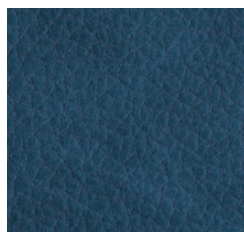
663 - Beige
Beige | Beige



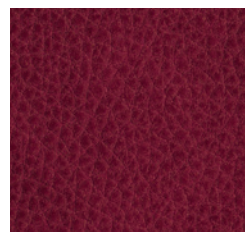
665 - Oliva
Olive | Olive



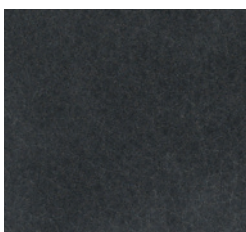
664 - Tabacco
Tobacco | Tabac



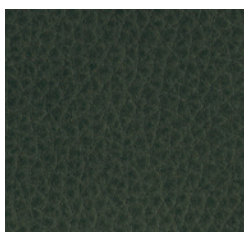
667 - Navy
Navy Blue | Bleu Aviateur



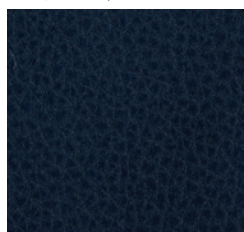
669 - Rosso
Red | Rouge



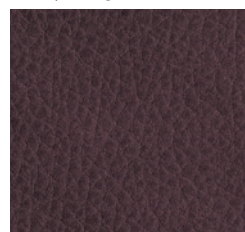
662 - Grafite
Graphite | Graphite



666 - Alga
Seaweed | Algue



668 - Blu
Blue | Bleu



670 - Vinaccio
Wine Red | Rouge Vin

La stampa ha carattere indicativo e potrebbe scostarsi leggermente dalla realtà
The printout is an example and may differ slightly from the actual product | L'impression a caractère indicatif et pourrait différer de la réalité

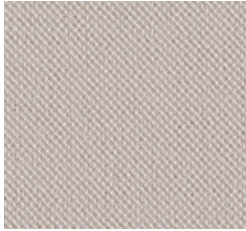
CAT_F

TAYLOR F.R. by Flukso

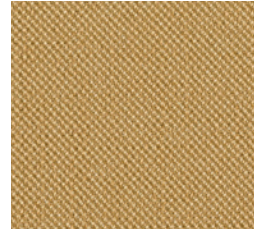
100% Poliestere
Peso: 330 gr/m²
Martindale 60.000 cicli
Ignifugo classe 1

100% Polyester
Weight: 330 gr/m²
Martindale 60.000 turns
Fire-retardant class 1 (one)

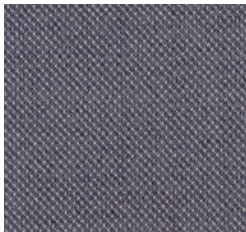
100% Polyester
Poids: 330 gr/m²
Martindale 60.000 cycles
Ignifuge classe 1



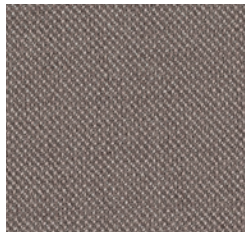
689 - Marna
Marl | Marne



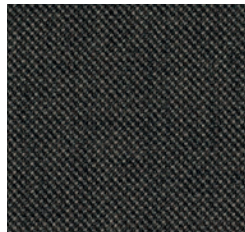
699 - Odra
Ocher | Ocre



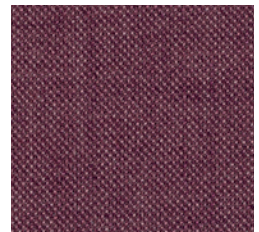
690 - Grigio Scuro
Dark Grey | Gris Foncé



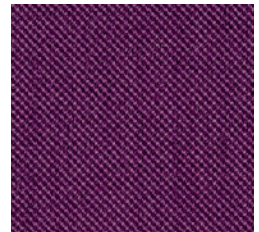
693 - Tortora
Grey Beige | Gris Tourterelle



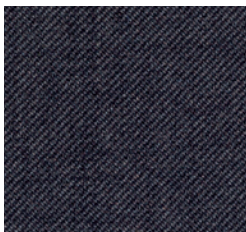
695 - Oliva
Olive | Olive



700 - Mattone
Brick Red | Rouge Brique



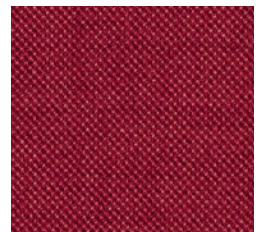
701 - Prugna
Plum | Prune



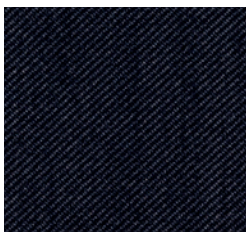
691 - Grafite
Graphite | Graphite



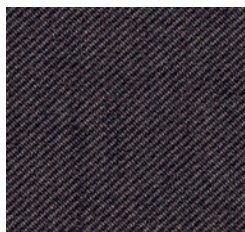
697 - Avio
Navy Blue | Bleu Aviateur



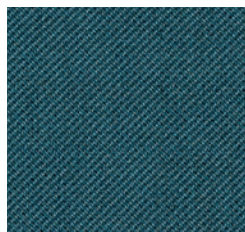
702 - Rosso
Red | Rouge



692 - Nero
Black | Noir



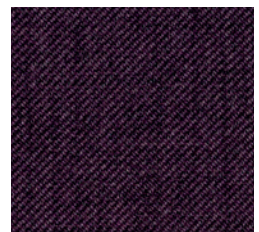
694 - Tabacco
Tobacco | Tabac



696 - Petrolio
Petroleum | Pétrole



698 - Blu Notte
Night Blue | Bleu Nuit



703 - Vinaccio
Wine Red | Rouge Vin

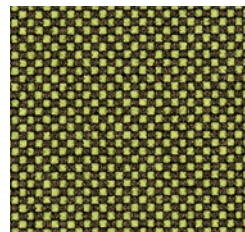
CAT_G

GO CHECK by Gabriel

100% Trevira CS
Peso: 310 gr/m²
Martindale 80.000 cicli
Ignifugo classe 1

100% Trevira CS
Weight: 310 gr/m²
Martindale 80.000 turns
Fire-retardant class 1 (one)

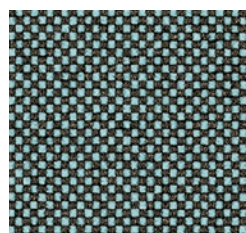
100% Trevira CS
Poids: 310 gr/m²
Martindale 80.000 cycles
Ignifuge classe 1



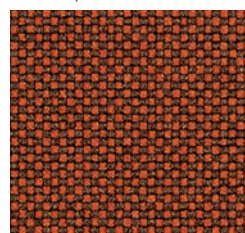
748 - Giallo
Yellow | Jaune



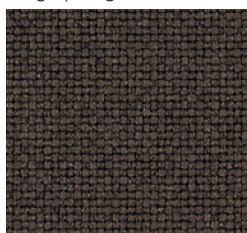
738 - Beige
Beige | Beige



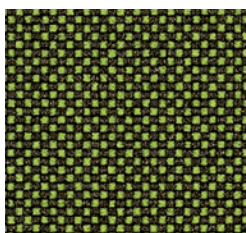
744 - Azzurro
Azure | Azur



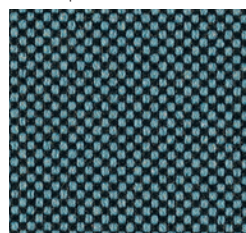
749 - Arancio
Orange | Orange



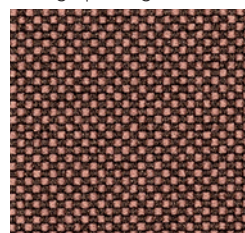
739 - Fango
Mud | Boue



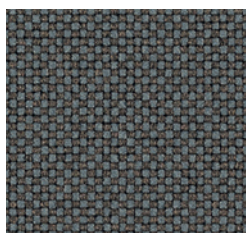
741 - Verde
Green | Vert



745 - Turchese
Turquoise | Turquoise



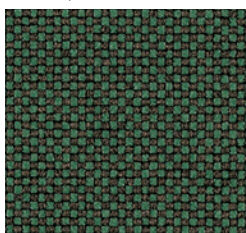
750 - Pesca
Peach | Pêche



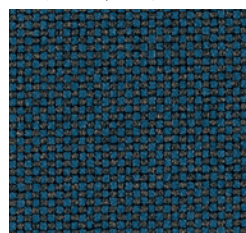
736 - Grigio
Grey | Gris



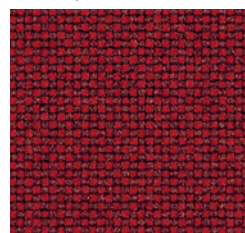
740 - Cacao
Cocoa | Cacao



742 - Prato
Lawn | Pelouse



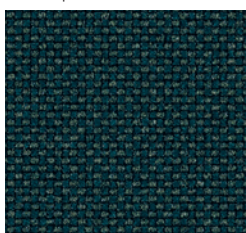
746 - Mare
Sea | Mer



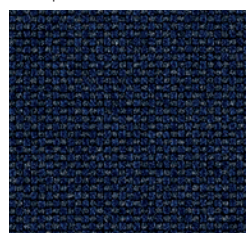
751 - Rosso
Red | Rouge



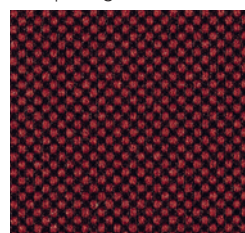
737 - Nero
Black | Noir



743 - Bottiglia
Bottle | Bouteille



747 - Blu
Blue | Bleu



752 - Amaranto
Amaranth | Amarante

La stampa ha carattere indicativo e potrebbe scostarsi leggermente dalla realtà
The printout is an example and may differ slightly from the actual product | L'impression a caractère indicatif et pourrait différer de la réalité

CAT_G

RUNNER by Gabriel

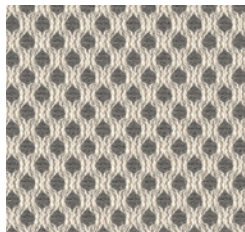
100% Poliestere
Peso: 319 gr/m²
Martindale 70.000 cicli
Ignifugo classe 1

100% Polyester
Weight: 319 gr/m²
Martindale 70.000 turns
Fire-retardant class 1 (one)

100% Polyester
Poids: 319 gr/m²
Martindale 70.000 cycles
Ignifuge classe 1



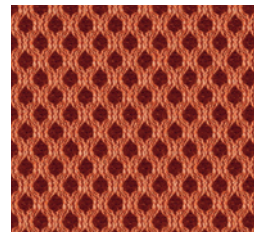
757 - Bianco
White | Blanc



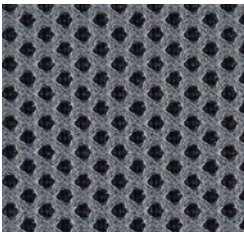
761 - Beige
Beige | Beige



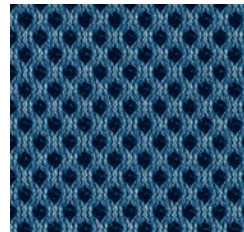
763 - Verde
Green | Vert



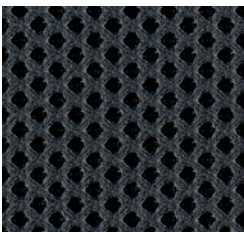
767 - Arancio
Orange | Orange



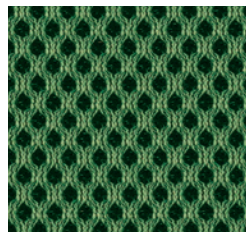
758 - Acciaio
Steel | Acier



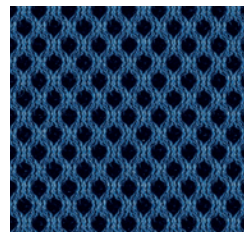
765 - Turchese
Turquoise | Turquoise



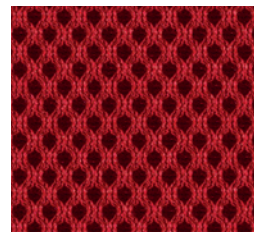
759 - Grafite
Graphite | Graphite



764 - Prato
Lawn | Pelouse



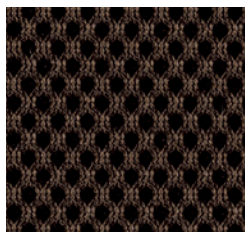
766 - Mare
Sea | Mer



768 - Rosso
Red | Rouge



760 - Nero
Black | Noir



762 - Marrone
Brown | Marron

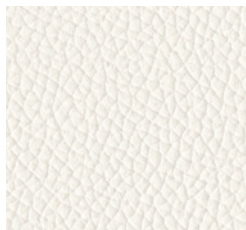
CAT_H

PELLE

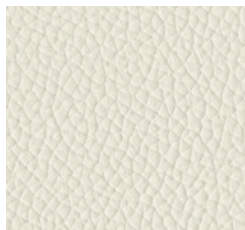
100% Pelle Bovina,
smerigliata e stampata.
Spessore 0,8 - 1,0 mm.
Eventuali imperfezioni,
graffi e cicatrici presenti
nella pelle non devono
essere considerati difetti,
ma pregi e caratteristiche
di garanzia e autenticità
della vera pelle.

100% cowhide,
sanded and printed.
Thickness 0.8 - 1.0 mm.
Possible leather scratches
and marks are not to be
considered imperfections but
a guarantee of its quality and
authenticity.

100% cuire de bovins,
poncé et imprimé.
Épaisseur: 0,8 - 1,0 mm.
Les éventuelles imperfections,
égratignures ou cicatrices
présentes dans le cuir ne
sont pas des défauts, mais
des marques naturelles, une
garantie de l'authenticité
du vraicuir.



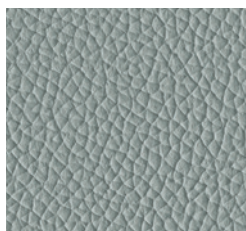
773 - Bianco
White | Blanc



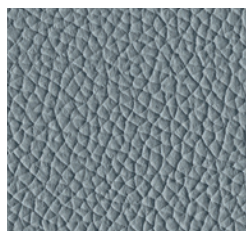
777 - Latte
Milk | Lait



787 - Ananas
Pineapple | Ananas



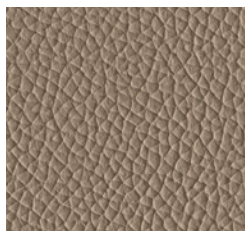
774 - Acqua
Water | Eau



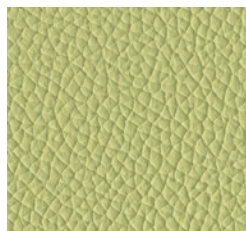
784 - Piombo
Lead | Plomb



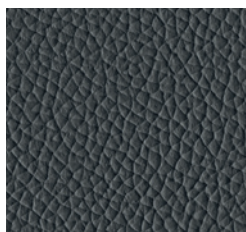
788 - Arancio
Orange | Orange



778 - Pietra
Stone | Pierre



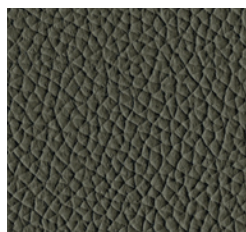
781 - Lime
Lime | Lime



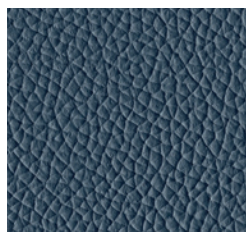
775 - Ardesia
Slate | Ardoise



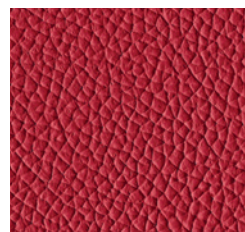
779 - Fango
Mud | Boue



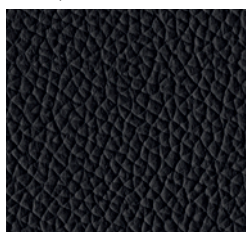
782 - Muschio
Moss Green | Vert Mousse



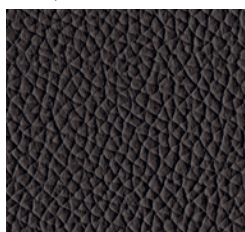
785 - Blu Notte
Night Blue | Bleu Nuit



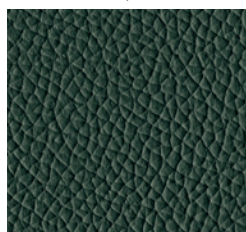
789 - Rosso
Red | Rouge



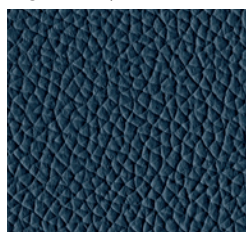
776 - Nero
Black | Noir



780 - Testa di Moro
Dark Brown | Marron Foncé



783 - Verdone
Dark Green | Vert Foncé



786 - Oceano
Ocean | Océan



790 - Granata
Garnet | Grenat

La stampa ha carattere indicativo e potrebbe scostarsi leggermente dalla realtà
The printout is an example and may differ slightly from the actual product | L'impression a caractère indicatif et pourrait différer de la réalité

RETE_ R1

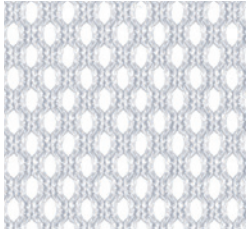
×

RETE ROUND

100% Poliestere
Peso: 510 gr/m²
Martindale 60.000 cicli

100% Polyester
Weight: 510 gr/m²
Martindale 60.000 turns

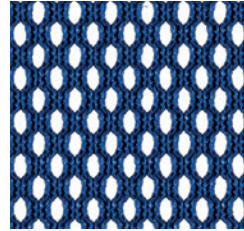
100% Polyester
Poids: 510 gr/m²
Martindale 60.000 cycles



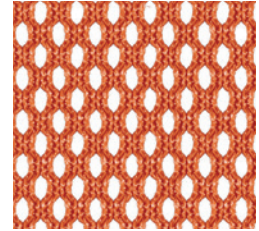
301 - Bianco
White | Blanc



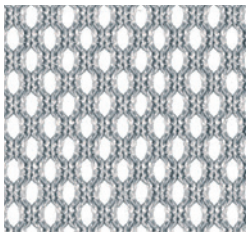
308 - Verde
Green | Vert



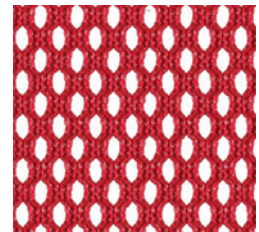
305 - Bluette
Bluette | Bluette



306 - Arancio
Orange | Orange



302 - Grigio
Grey | Gris



307 - Rosso
Red | Rouge



303 - Nero
Black | Noir

×

solo per schienale
for backrest only
seulement pour dossier

SISTEMA RETE
CAST RETE
F03 RETE

RETE_ R2

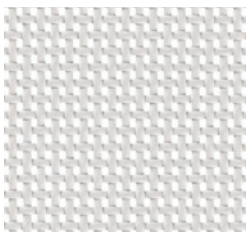
△

RETE BREAK

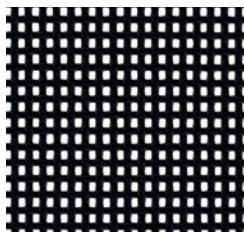
70% PVC
30% Poliestere
Peso: 560 gr/m²
Martindale 100.000 cicli

70% PVC
30% Polyester
Weight: 560 gr/m²
Martindale 100.000 turns

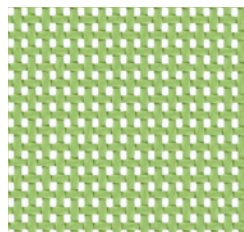
70% PVC
30% Polyester
Poids: 560 gr/m²
Martindale 100.000 cycles



310 - Bianco
White | Blanc



312 - Nero
Black | Noir



311 - Verde
Green | Vert

△

solo per schienale
for backrest only
seulement pour dossier

HELLÒ RETE
CIÀK RETE

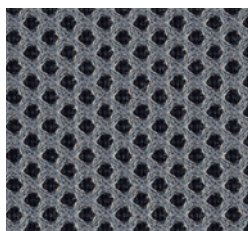
RETE_ R3

○

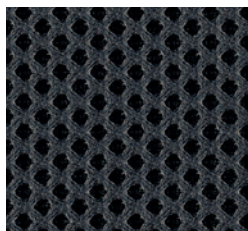
RETE GABRIEL



757 - Bianco
White | Blanc



758 - Acciaio
Steel | Acier

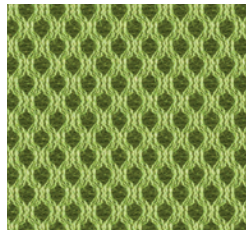


759 - Grafite
Graphite | Graphite

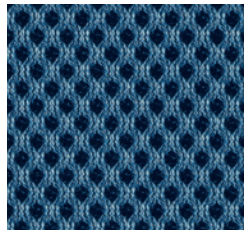
100% Poliestere
Peso: 319 gr/m²
Martindale 70.000 cicli
Ignifugo classe 1

100% Polyester
Weight: 319 gr/m²
Martindale 70.000 turns
Fire-retardant class 1 (one)

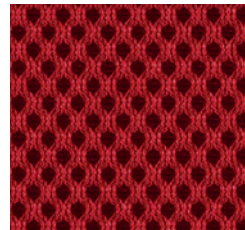
100% Polyester
Poids: 319 gr/m²
Martindale 70.000 cycles
Ignifuge classe 1



763 - Verde
Green | Vert



765 - Turchese
Turquoise | Turquoise



768 - Rosso
Red | Rouge

○ solo per schienale
for backrest only
seulement pour dossier
OSCAR RETE

La stampa ha carattere indicativo e potrebbe scostarsi leggermente dalla realtà
The printout is an example and may differ slightly from the actual product | L'impression a caractère indicatif et pourrait différer de la réalité

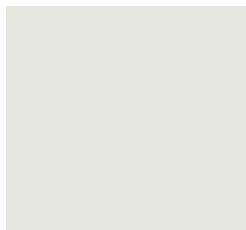
TEC_T1

Mod. F01

100% Polipropilene

100% Polypropylene

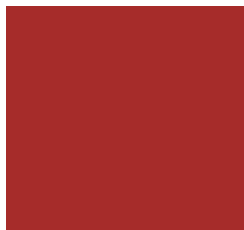
100% Polypropylene



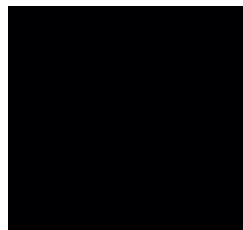
912 - Bianco
White | Blanc
(RAL 9003)



940 - Verde
Green | Vert
(PANTONE 7495 EC)



913 - Rosso
Red | Rouge
(RAL 3000)



950 - Nero
Black | Noir
(RAL 9005)

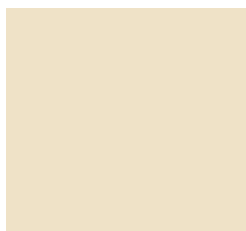
TEC_T2

Mod. F02

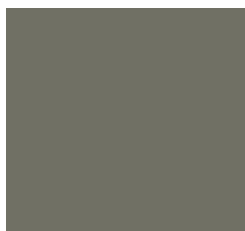
100% Polipropilene

100% Polypropylene

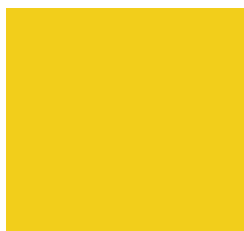
100% Polypropylene



916 - Avorio
Ivory | Ivoire
(RAL 1013)



917 - Tortora
Grey Beige | Gris Tourterelle
(RAL 7003)



918 - Giallo
Yellow | Jaune
(RAL 1012)

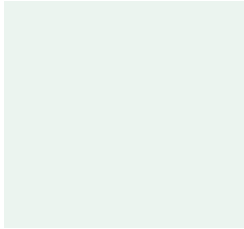
TEC_ T3

Mod. F03

100% Polipropilene

100% Polypropylene

100% Polypropylene



912 - Bianco
White | Blanc



950 - Nero
Black | Noir

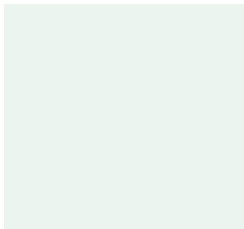
TEC_ T4

Mod. F04

100% Polipropilene

100% Polypropylene

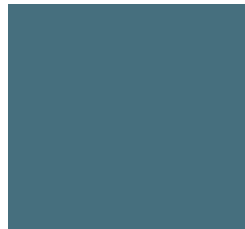
100% Polypropylene



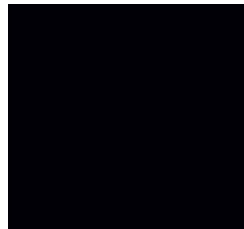
912 - Bianco
White | Blanc



919 - Arancio
Orange | Orange



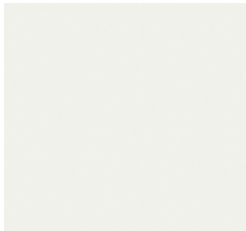
915 - Petrolio
Petroleum | Pétrole



950 - Nero
Black | Noir

LEGNI | WOOD | BOIS

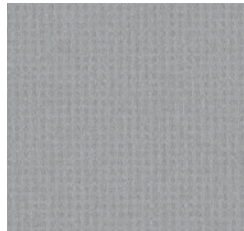
○ Melaminico
Melamine
Melamine
△ 3D Foil



69 - Bianco Br. ○ △
Br. White | Blanc Br.



44 - Stone Grey ○ △
Stone Grey | Stone Grey



01 - Argento Golf ○
Golf Silver | Argent Golf



55 - Antracite ○
Anthracite | Anthracite



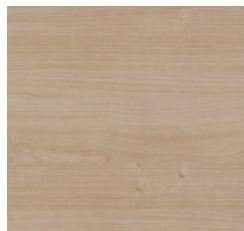
12 - Olmo grey △
Grey Elm | Orme Grey



03 - Rovere ○
Oak | Chêne



37 - Noce Pacific △
Pacific Walnut | Noyer Pacific



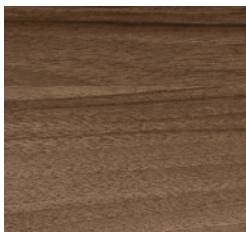
91 - Acero △
Maple | Erable



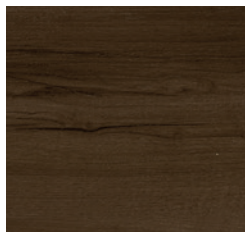
67 - Teak Samoa △
Samoa Teak | Teak Samoa



06 - Noce Pavia ○
Pavia Walnut | Noyer Pavia



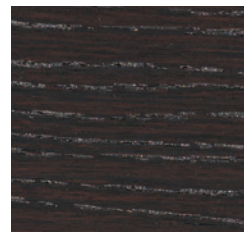
29 - Noce Italia △
Italy Walnut | Noyer Italie



30 - Noce Bali △
Bali Walnut | Noyer Bali



04 - Rovere Grey ○
Grey Oak | Chêne Gris



61 - Rovere Afro △
African Oak | Chêne Afro



52 - Frassino Brown △
Brown Ash | Frene Brown



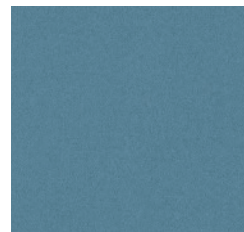
11 - Giallo Fresia ○
Freesia Yellow | Jaune Freesia



96 - Verde Bosco ○
Wood Green | Vert Forêt

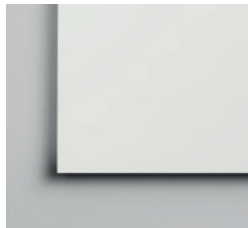


33 - Amaranto ○
Amaranth | Amarante

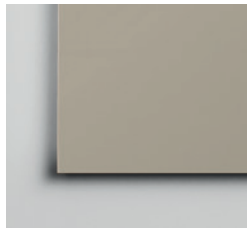


32 - Azzurro Sky ○
Sky Blue | Bleu Sky

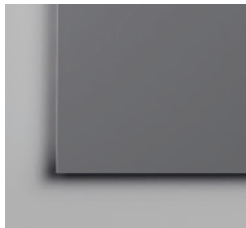
METALLO | METAL | MÉTAL



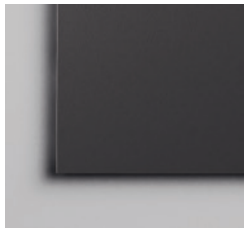
BI 02 - Bianco
White | Blanc



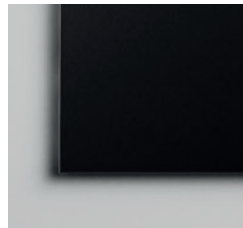
SG 01 - Stone Grey
Stone Grey | Stone Grey



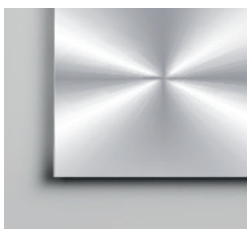
AR 02 - Argento
Silver | Argent



AN 02 - Antracite
Anthracite | Anthracite



NR 02 - Nero
Black | Noir



CR 01 - Cromato
Chromed | Chromée



IG 01 - Inox Grey
Inox grey | Inox grey



SL 01 - Silver Light
Silver Light | Silver Light

VETRI | GLASS | VITRE



79 - Bianco
White | Blanc



72 - Tortora
Grey Beige | Gris Tourterelle



10 - Nero
Black | Noir

Las Mobili s.r.l

Via dell'Industria, n°81
64018 Tortoreto (TE) - Italy
T. +39. 0861 7831
F. +39. 0861 786851
las@las.it - www.las.it